

# VAC WD 20-40-60



PROFESSIONAL VACUUM CLEANERS

## *USE AND MAINTENANCE MANUAL*





## CONTENTS

<b>SYMBOLS USED IN THE MANUAL</b> .....	4	<b>ACCESSORIES UNIT</b> .....	23
<b>PURPOSE AND CONTENT OF THE MANUAL</b> .....	4	<b>FRONT SQUEEGEE OPTIONAL CONTROL AND CLEANING</b>	
<b>TARGET GROUP</b> .....	4	<b>KIT (VAC WD 60 VERSIONS)</b> .....	23
<b>STORING THE USE AND MAINTENANCE</b>		<b>CONTROLLING AND CLEANING THE FABRIC FILTER</b> .....	24
<b>MANUAL</b> .....	4	<b>CONTROLLING AND CLEANING THE SPONGE FILTER</b> .....	25
<b>ON DELIVERY OF THE APPLIANCE</b> .....	4	<b>CONTROLLING AND CLEANING THE FLOAT</b> .....	25
<b>INTRODUCTORY COMMENT</b> .....	4	<b>CONTROLLING AND CLEANING THE CARTRIDGE FILTER</b>	
<b>IDENTIFICATION DATA</b> .....	5	(OPTIONAL) .....	26
<b>TECHNICAL DESCRIPTION</b> .....	5	<b>CONTROLLING AND CLEANING THE NYLON FILTER</b>	
<b>INTENDED USE</b> .....	5	(OPTIONAL) .....	26
<b>SAFETY</b> .....	5	<b>CONTROL AND OPERATION</b> .....	27
<b>SERIAL NUMBER PLATE</b> .....	5	<b>DISPOSAL</b> .....	28
<b>TECHNICAL DATA</b> .....	5		
<b>PREPARATION OF THE APPLIANCE</b> .....	14		
<b>HANDLING THE PACKED APPLIANCE</b> .....	14		
<b>HOW TO UNPACK THE APPLIANCE</b> .....	14		
<b>HOW TO TRANSPORT THE APPLIANCE</b> .....	14		
<b>LOCATION OF THE MAIN COMPONENTS OF THE</b>			
<b>APPLIANCE</b> .....	15		
<b>LOCATION OF THE HEAD UNIT COMPONENTS</b> .....	15		
<b>LOCATION OF THE TANK UNIT COMPONENTS (VAC WD 20</b>			
<b>AND VAC WD 40 VERSIONS)</b> .....	15		
<b>LOCATION OF THE TANK UNIT COMPONENTS (VAC WD 60</b>			
<b>VERSIONS)</b> .....	15		
<b>APPLIANCE SAFETY</b> .....	16		
<b>PREPARING TO WORK</b> .....	16		
<b>INSERTING THE PAPER COLLECTION BAG-FILTER</b>			
(OPTIONAL) .....	16		
<b>INSERTING THE NYLON FILTER (OPTIONAL)</b> .....	17		
<b>INSERTING THE CARTRIDGE FILTER (OPTIONAL)</b> .....	17		
<b>FRONT SQUEEGEE OPTIONAL FIXING KIT (ONLY FOR TOP</b>			
<b>VAC WD 60 VERSIONS)</b> .....	18		
<b>PREPARING TO WORK</b> .....	18		
<b>WORK</b> .....	19		
<b>VACUUM CLEANERS</b> .....	19		
<b>WET VACUUM CLEANER</b> .....	19		
<b>WET VACUUM CLEANERS WITH OPTIONAL FRONT</b>			
<b>SQUEEGEE KIT (VAC WD 60 VERSIONS)</b> .....	20		
<b>AT THE END OF WORK</b> .....	21		
<b>MAINTENANCE</b> .....	21		
<b>RECOMMENDED MAINTENANCE OPERATIONS</b> .....	21		
<b>CONTROLLING AND CLEANING THE COLLECTION TANK</b> .....	22		
<b>CONTROLLING AND CLEANING THE VACUUM</b>			

The descriptions contained in this document are not binding. The company therefore reserves the right to make any modifications at any time to elements, details, or accessory supply, as considered necessary for reasons of improvement or manufacturing/commercial requirements. The reproduction, even partial, of the text and drawings contained in this document is prohibited by law.

**The company reserves the right to make any technical and/or supply modifications. The images are shown as a reference only, and are not binding as to the actual design and/or equipment.**

## SYMBOLS USED IN THE MANUAL



**Open book symbol with an "i":**  
Indicates the need to consult the instruction manual.



**Open book symbol:**  
Tells the operator to read the manual before using the appliance.



**Covered place symbol:**  
the operations preceded by this symbol must always be carried out in a dry, covered area.



**Warning symbol:**  
Carefully read the sections marked with this symbol and observe the indications, for the safety of the operator and the appliance.



**Disposal symbol:**  
carefully read the sections marked with this symbol for disposing of the appliance.



**Protective gloves symbol:**  
Indicates that the operator should always wear protective gloves, to avoid the risk of serious injury to his hands from sharp objects.



**Protective gloves symbol:**  
Indicates that the operator should always wear protective gloves, to avoid the risk of serious injury to his hands from chemical agents.



**Information symbol:**  
Provides the operator with additional information for improving the use of the appliance.

## PURPOSE AND CONTENT OF THE MANUAL

The aim of this manual is to provide customers with all the information needed to use the appliance in the safest, most appropriate and most autonomous way. It includes information concerning technical aspects, safety, operation, appliance downtime, maintenance, spare parts and scrapping. Operators and qualified technicians must read the instructions in this manual carefully before carrying out any operation on the appliance. If in doubt about the correct interpretation of instructions, contact your nearest Customer Service Centre to obtain the necessary clarifications.

## TARGET GROUP

This manual is aimed at operators and qualified technicians responsible for appliance maintenance. Operators must not perform operations that should be carried out by qualified technicians. ICE cannot be held liable for damages resulting from failure to comply with this prohibition.

## STORING THE USE AND MAINTENANCE MANUAL

The Use and Maintenance Manual must be stored in its special pouch close to the appliance, protected from liquids and anything else that could compromise its legibility.

## ON DELIVERY OF THE APPLIANCE

When the machine is delivered to the customer, an immediate check must be performed to ensure all the material mentioned in the shipping documents has been received, in addition to verifying that the equipment has not been damaged during transportation. If this is the case, the carrier must ascertain the extent of the damage at once, informing our customer service office. It is only by prompt action of this type that the missing material can be obtained, and compensation for damage successfully claimed.

## INTRODUCTORY COMMENT

Any type of equipment can only work properly and effectively if used correctly and kept in full working order by performing the maintenance operations described in the attached documentation. You should therefore read this instruction manual carefully, consulting it again if issues arise while using the machine. If necessary, remember that our assistance service (organised in collaboration with our dealers) is always available for advice or direct intervention.

## IDENTIFICATION DATA

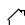
For technical assistance or to request replacement parts, always give the model, the version and serial number written on the serial number plate.

## TECHNICAL DESCRIPTION

The **VAC WD 20-40-60** is a vacuum cleaner and a wet vacuum cleaner which uses the vacuum created in the collection tank by the fan, operated by the electric motor, to pick up dust and dry solid elements measuring up to 2cm at an ambient temperature, or else liquids, using accessories in contact with the floor and furnishings. The vacuum hose channels the air into the collection tank, where the dust and solid residues are trapped by filters. **The appliance must only be used for this purpose.**

## INTENDED USE

*This appliance is designed and built to be used by a qualified operator to clean (by vacuuming solid, dry elements) smooth, compact flooring in the commercial, residential and industrial sectors, in proven safety conditions.*

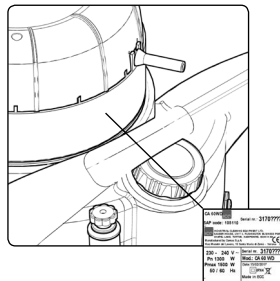
 *The appliance is only suitable for use in indoor - or at least covered - areas. The appliance is not suitable for use in the rain, or under jets of water. IT IS FORBIDDEN to use the appliance for picking up dangerous dusts or inflammable liquids in places with an explosive atmosphere. In addition, it is not suitable as a means of transport for people or objects.*

## SAFETY

Operator cooperation is paramount for accident prevention. No accident prevention programme can be effective without the full co-operation of the operator who is directly responsible for machine operation. The majority of occupational accidents that happen both in the workplace or whilst moving are caused by failure to respect the most basic safety rules. An attentive, careful operator is most effective guarantee against accidents and is fundamental in order to implement any prevention programme.

## SERIAL NUMBER PLATE

The serial number plate is located at the rear of the vacuum cleaner, and indicates the general characteristics of the appliance, in particular the appliance's serial number. The serial number is a very important piece of information and should always be provided together with any request for assistance or to purchase spare parts.



TECHNICAL DATA	U/M	VAC WD 20	VAC WD 40	VAC WD 60
Power supply voltage	V	230	230	230
Frequency	Hz	50	50	50
Rated power	W	1000	1000	1000
Type of vacuum cleaner		Wet & Dry	Wet & Dry	Wet & Dry
Vacuum	kPa	21	21	21
Air flow rate	m <sup>3</sup> /h	194	194	194
Collection tank useful capacity	l	30	60	80
Barrel material		Polyethylene	Polyethylene	Polyethylene
Length of power supply cable	m	10	10	10
Dry weight	kg	15	16	23
Dimensions (length x width x height)	cm	45 x 42 x 64	45 x 42 x 77	52 x 48 x 92
Accessories diameter	mm	37	37	40
Sound pressure level (ISO 11201)	dB (A)	70	70	70
Uncertainty K <sub>pa</sub>	dB (A)	1,5	1,5	1,5

## SAFETY WARNINGS FOR WET/DRY VACUUM CLEANER



Before using the appliance for the first time, read and comply with these safety warnings. Keep these safety warnings for consultation in the future or to hand them over to successive owners.

- Before commissioning, read the appliance's user manual.
- The warning plates on the appliance provide important instructions for its safe use.
- Always comply with both the directions on the instructions, as well as current safety standards.
- Keep the packing film out of the reach of children. Risk of asphyxiation!

## DANGER LEVELS



**DANGER:** Indicates an imminent danger that could cause serious injury or death.



**WARNING:** Indicates a probable dangerous situation that could cause serious injury or death.



**CAUTION:** Indicates a probable dangerous situation that could cause minor injuries.



**ATTENTION:** Indicates a probable dangerous situation that could damage objects.

## CONNECTION TO THE ELECTRICITY GRID



### DANGER:

- To reduce the risk of fire, electric shocks or injury, please read and comply with all the safety instructions and warning indications carefully. This vacuum cleaner has been designed to be safe when it is used for cleaning in the manner specified. If damage to electrical or mechanical components is found, the vacuum cleaner and/or the accessory must be repaired at the relative authorised service centre or else at the manufacturer before use, in order to prevent further damage to the appliance or physical injury to the user.
- Before connecting the appliance to the electricity socket, make sure the electrical information on the plate corresponds to that of the mains supply. **The appliance must only be powered with alternating current and voltage equal to that shown on the serial number plate.**
- The power supply cable outlet must have an earth connection in compliance with the regulatory standards.
- Before using, check for any damage on the connection cable and on the power plug. If the cable is damaged, immediately contact a specialist technician for restoring normal operations.
- Connect the appliance only to an electrical connection installed by an electrical installer in conformity with IEC 60364-1.
- Never touch the power plug with wet hands.
- Make sure that the cable to the mains or the extension cable have not been damaged by having been walked on, crushed, pulled or the like. Protect the cable from heat and from contact with oils or sharp edges.
- Regularly check that the cable connecting to the mains is not damaged, for example with signs of ageing or cracks. If any damage is encountered, the cable must be replaced by a specialized ICE technician, or a technician with similar qualifications, prior to using the machine again.

- Protection against splashes of water and the mechanical strength need to be ensured also after any replacement of the joints of the power cable or the extension cable.
- Do not clean the appliance with a hose or a jet of high pressure water (risk of short-circuit or other electrical faults).

**ATTENTION:**

- The procedure causes short-term reduction in voltage.
- In unfavourable grid conditions the other appliances could be damaged.
- This damage could occur if the grid impedance is less than  $0.15\Omega$ .

**USO - EMPLOYMENT****DANGER:**

- Never use with a damaged cable or plug. When removing from an electrical socket, pull the plug and not the cable. Do not handle the plug or the vacuum cleaner with wet hands. Deactivate all the controls before connecting or disconnecting from the electrical socket.
- Do not pull or transport the appliance by the cable, do not use the cable as a handle, do not close a door on the cable, and do not pull the cable around sharp edges or corners. Do not pass the vacuum cleaner over the cable. Keep the cable away from hot surfaces.
- Be careful when cleaning on stairs.
- The appliance must not be used or kept outdoors, in damp conditions or directly exposed to rain.
- The storage temperature must be between  $-25^{\circ}\text{C}$  and  $+55^{\circ}\text{C}$ .
- Conditions of use: ambient temperature between  $0^{\circ}\text{C}$  and  $40^{\circ}\text{C}$  with a relative humidity between 30 and 95%. The vacuum cleaner has been developed only for dry cleaning



- and it should not be used or kept outdoors in moist conditions.
- Before using, make sure the appliance and the work equipment and in particular the extension cable are in a good condition. If there is any damage, immediately pull out the power plug from the mains socket, the appliance should not be used.
  - When the appliance is used in dangerous situations (for example filling stations) the relative safety regulations must be followed. It is forbidden to use the appliance in areas with a high risk of explosion.
  - Certain substances can form explosive vapours and mixtures together with intake air.
  - Never vacuum the following substances:
    - ◆ Explosive or inflammable gases, liquids and powders (reactive powders).
    - ◆ Reactive metal powders (for example aluminium, magnesium, zinc) together with strongly alkaline detergents and acids.
    - ◆ Acids and alkalines in their purest state.
    - ◆ Organic solutions (for example gasoline, paint thinners, acetone or gasoline).



**WARNING:**

- Keep hair, loose clothing, fingers and all body parts away from openings and from moving parts. Do not put objects into the openings or use the appliance with the opening blocked. Keep the openings free of dust, fur, cloths, hair, and everything else that can reduce the air flow.
- This appliance is not suitable for vacuuming dangerous powders.
- Do not use to vacuum flammable or combustible liquids like gasoline, or use in areas where they may be present.
- Do not vacuum anything that is burning or smouldering, like cigarettes, matches or glowing embers.



- **The appliance can be used by children over 8 years of age and by people with limited physical, sensorial or mental, or by people who have no experience or the required knowledge, as long as they are supervised or after they have been given instruction regarding using the appliance safely and they understand the dangers involved in using it. Children should not play with the appliance. Children should not clean or carry out maintenance operations without the supervision of an adult.**
- Children must be supervised to make sure they do not play with the appliance.
- Children should not do any cleaning or maintenance that is the responsibility of the user without supervision.
- This appliance should only be used in closed areas.
- Never leave the appliance unattended when it is connected to the mains socket. Take the plug out of the socket when not used and before any maintenance.
- Burning or smouldering objects.
- It is forbidden to vacuum persons or animals with this appliance.
- In low temperatures, the appliances should not be used outdoors.



### **CAUTION:**

- When the appliance is operating do not bring it close to delicate organs like ears, mouth, eyes, etc.
- Do not use the appliance without filters. The dry vacuum cleaner must always have a bag filter fitted. The wet vacuum cleaner should always have a cartridge filter, a wet filter and the float system fitted when operating BOTH WET AND DRY. Please note that when using a dry filter during wet vacuuming the filling factor of the container can vary.
- Regularly clean the water level limitation device and check it for the signs of damage.

- The device must only be kept in closed areas.
- If the vacuum cleaner is not working properly or it has fallen, been damaged, left outside or has fallen in water, take it to a service centre or back to the retailer.
- Always use the appliance in compliance with its intended use, taking into consideration local conditions and looking out for the presence of others, especially children, when working.
- Never leave the appliance unattended until it has been switched off and the plug has been taken out of the mains socket.
- Always wear suitable protective gloves when working with the appliance.
- The appliance should only be used by people trained in its use and who have shown that they know how to use the appliance and have been expressly authorised to do so.
- Do not place any liquid containers on the appliance.
- In the event of a fire, use a powder extinguisher. Do not use water.
- If foam forms or liquid leaks, immediately switch off the appliance.

## TRANSPORT



### **WARNING:**

- Before transporting, close all the locking hooks of the vacuum head.
- Do not tip over the appliance if there is any liquid in the dirt collection tank.
- When transporting the appliance, the engine should be switched off, and make sure that the appliance is in a stable and secure position.

## MAINTENANCE



### **DANGER:**

- Before cleaning and carrying out maintenance on the appliance and before replacing any components, switch off the appliance and pull out the power plug from the mains socket.
- Repairs should only be carried out by authorised service centres or by personnel who are experts in this field and who are familiar with all the current safety norms.
- Observe the safety check as per local provisions for commercial appliances.

## ACCESSORIES AND SPARE PARTS



### **CAUTION:**

Only use accessories and spare parts that have been authorised by the manufacturer. Original accessories and spare parts ensure the appliance can be used safely and without any fault.

## EXTENSION CABLES



### **CAUTION:**

CABLE LENGTH	CABLE SECTION	
	<16A	<25A
Up to 20m	1.5mm <sup>2</sup>	2.5mm <sup>2</sup>
From 20m to 50m	2.5mm <sup>2</sup>	4.0mm <sup>2</sup>

Only use the materials expressly recommended by the manufacturer as cable extensions (contact an authorised retailer) or else high quality models. When using an extension, respect its minimum cross-section.

## DRY VACUUM CLEANER

### **DANGER:**

The appliance has been designed only for vacuuming dry solid material and it should not be used for other purposes.

### **WARNING:**

The appliance is not suitable for vacuuming powders that are damaging to health.

## VACUUM CLEANER FOR LIQUIDS

### **DANGER:**

- The water level limitation device should be cleaned regularly and regularly checked for breaks and wear.
- If foam forms or liquid leaks, immediately switch off the appliance!
- Unless otherwise stated in the instructions, liquid substances can be vacuumed only up to a temperature of 45°C.

### **WARNING:**

This appliance is not suitable for vacuuming powders that are damaging to health unless expressly stated. Observe the technical warnings set out in the user manual.

### **ATTENTION:**

- Protect the appliance against frost.
- This appliance is not suitable for vacuuming coolants and lubricants unless expressly stated.

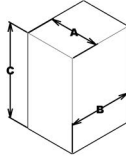
## PREPARATION OF THE APPLIANCE

### HANDLING THE PACKED APPLIANCE

Since the packaging elements (plastic bags, staples, etc.) are a potential source of danger, they should not be left within the reach of children, disabled persons, etc.

Gross weight of device, including packaging, is:

	U/M	
VAC WD 20	kg	18
VAC WD 40	kg	18
VAC WD 60	kg	26



The dimensions of the package are as follows: ATTENTION:

	U/M	A	B	C
VAC WD 20	cm	45	47	77
VAC WD 40	cm	45	47	92
VAC WD 60	cm	52	64	104



**ATTENTION:** Move the packaged product in accordance with legal legislation requirements regarding accident prevention, the size and the mass of the packaging itself.

### HOW TO UNPACK THE APPLIANCE

The procedure for removing the device from its packaging is the following:

1. Open the outer box.



**ATTENTION:** You are advised to always wear protective gloves, to avoid the risk of serious injury to your hands.

2. Remove the accessories from the box and carefully lay them on the ground.

3. Take out the vacuum head carton.
4. Remove the vacuum hose from the collection tank.
5. Remove the appliance from the box using the handle, being careful not to damage either during the operation.



**ATTENTION:** it is recommended that all the packaging components be kept for any future transportation of the appliance.

### HOW TO TRANSPORT THE APPLIANCE

The procedure for the safe handling of the device is the following:

1. Take all necessary steps to ensure that the device is in a safe condition (see "MACHINE SAFETY").
2. Remove the vacuum hose (1) (Fig.2) from the vacuum nozzle (2) on the collection tank; before pulling the vacuum hose press the button (3) for unlocking the catch (Fig.1).
3. Insert the appliance into the protective bag, taking care not to damage either during this operation.
4. Insert the appliance into the carton, taking care not to damage either during this operation.  
Remember to place at the bottom of the carton the block for the wheels of the appliance, position around the collection tank the blocks for preventing damage during transportation.

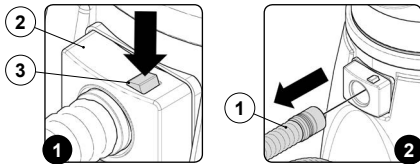
5. Insert the accessories support and the head block inside the carton.
6. Place the accessories in the carton.
7. Close the carton.



**ATTENTION:** When transporting the appliance on vehicles, secure it according to the directives in force so that it cannot slide or tip over.



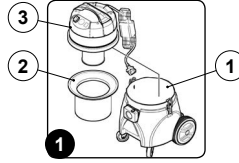
**ATTENTION:** You are advised to always wear protective gloves, to avoid the risk of serious injury to your hands.



### LOCATION OF THE MAIN COMPONENTS OF THE APPLIANCE

The basic components of the appliance are as follows:

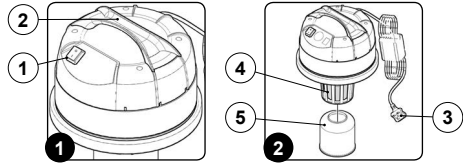
1. Collection tank unit.
2. Fabric filter kit.
3. Vacuum head unit.



### LOCATION OF THE HEAD UNIT COMPONENTS

The components of the vacuum head assembly are as follows:

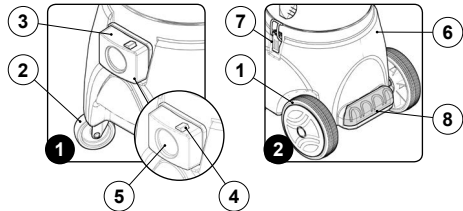
1. Main switch.
2. Handle bar for vacuum head lifting.
3. Power supply cable.
4. Float.
5. Sponge filter.



### LOCATION OF THE TANK UNIT COMPONENTS (VAC WD 20 AND VAC WD 40 VERSIONS)

The components of the collection tank are as follows:

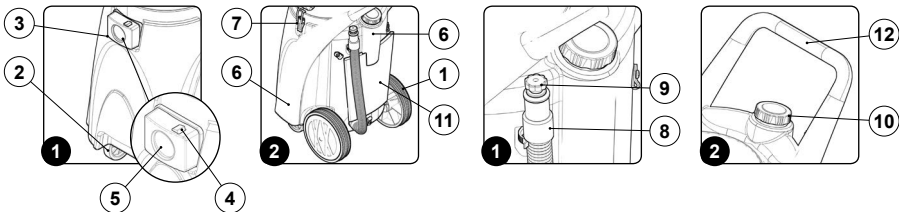
1. Rear wheels.
2. Front pivoting wheels.
3. Vacuum nozzle.
4. Vacuum hose coupling/uncoupling button.
5. Flexible hose housing.
6. Collection tank.
7. Vacuum head coupling/uncoupling hinges.
8. Accessories support.



### LOCATION OF THE TANK UNIT COMPONENTS (VAC WD 60 VERSIONS)

The components of the collection tank are as follows:

1. Rear wheels.
2. Front wheels.
3. Vacuum nozzle.
4. Vacuum hose coupling/uncoupling button.
5. Flexible hose housing.
6. Collection tank.
7. Vacuum head coupling/uncoupling hinges.
8. Rapid liquid drainage pipe.
9. Rapid drainage pipe cap.
10. Collection tank drainage cap.
11. Accessory-holder pocket.
12. Transportation handle.



### APPLIANCE SAFETY

The stages for making the appliance safe, thereby making it possible to carry out operations safely, are as follows:

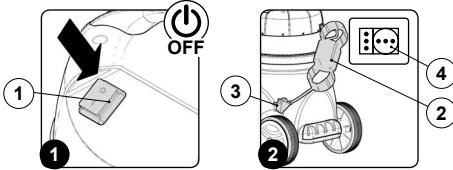
1. Make sure that the main switch (1) is in the rest position, if not, disable it by setting the switch to "0" (Fig.1).
2. Make sure that the plug (2) on the power cable (3) has been taken out of the mains supply socket (4), and if not, disconnect it (Fig.2).
3. Wind the power cable under the appliance's lifting handle.



**ATTENTION:** You are advised to always wear protective gloves, to avoid the risk of serious injury to your hands.



**ATTENTION:** To prevent any damage to the mains socket, pull out the plug (2) from the mains socket (4) by pulling the plug (2) directly instead of the power cable (3).



### PREPARING TO WORK

#### INSERTING THE PAPER COLLECTION BAG-FILTER (OPTIONAL)

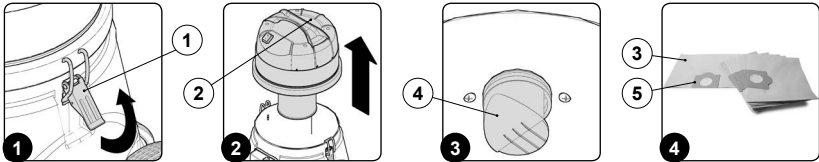
To insert the paper collection bag-filter inside the collection tank, proceed as follows:

1. Take all necessary steps to ensure that the device is in a safe condition (see [MACHINE SAFETY](#)”).



**ATTENTION:** You are advised to always wear protective gloves, to avoid the risk of serious injury to your hands.

2. Free the vacuum head unit from the collection tank by releasing the hooks (1) on the side of the collection tank ( Fig.1).
3. Using the handle (2) on the vacuum head unit (Fig.2), remove the vacuum head from the collection tank.
4. Lay the head gently on the floor.
5. Insert the paper collection bag-filter inside the collection tank (3) (Fig.4), making sure to insert the filter into the vacuum nozzle (4) (Fig.3) correctly, being careful not to damage the cardboard support (5) in the bag itself (Fig.4).



6. Using the handle (2), on the vacuum tank lid, place the vacuum tank lid on the collection tank (Fig.5).
7. Secure the vacuum head to the collection tank using the hooks (1) on the side of the collection tank ( Fig. 6).



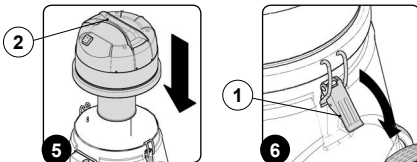
**ATTENTION:** The paper collection bag-filter should only be used for collecting solid waste.



**ATTENTION:** When using the paper collection bag-filter do not vacuum waste that could cut it, burning embers that could set it on fire, or liquid solutions that could dissolve it.



**ATTENTION:** The paper collection bag-filter cannot be used if the fabric filter is also used.





### INSERTING THE NYLON FILTER (OPTIONAL)

To insert the nylon filter in the collection tank, proceed as follows:

1. Take all necessary steps to ensure that the device is in a safe condition (see [MACHINE SAFETY™](#)).



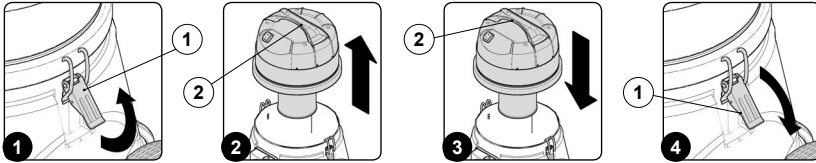
**ATTENTION:** You are advised to always wear protective gloves, to avoid the risk of serious injury to your hands.

2. Free the vacuum head from the collection tank by releasing the hooks (1) on the side of the collection tank ( Fig. 1).
3. Using the handle (2) on the vacuum head unit ( Fig.2), remove the vacuum head unit from the collection tank.

4. Lay the head gently on the floor.
5. Insert the nylon filter in the tank and fix it in place by having it adhere to the edge of the tank opening.
6. Using the handle (2), on the vacuum tank lid, place the vacuum tank lid on the collection tank ( Fig.3).
7. Secure the vacuum head to the collection tank using the hooks (1) on the side of the collection tank ( Fig. 4).



**ATTENTION:** the nylon filter must only be used together with the filter/float kit or the permanent fabric filter.



### INSERTING THE CARTRIDGE FILTER (OPTIONAL)

To insert the cartridge filter, proceed as follows:

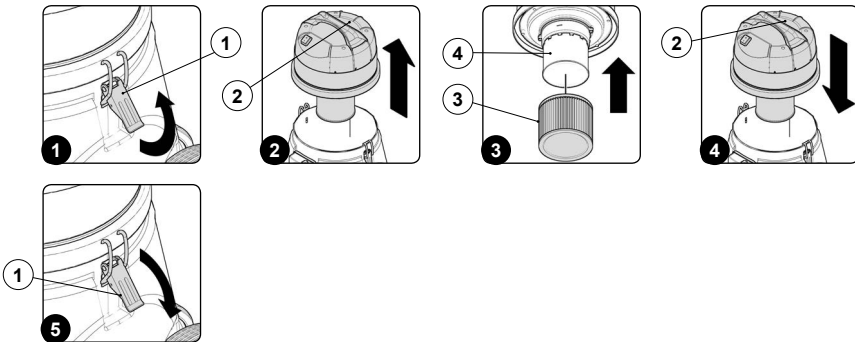
1. Take all necessary steps to ensure that the device is in a safe condition (see [MACHINE SAFETY™](#)).



**ATTENTION:** You are advised to always wear protective gloves, to avoid the risk of serious injury to your hands.

2. Free the vacuum head from the collection tank by releasing the hooks (1) on the side of the collection tank ( Fig. 1).

3. Using the handle (2) on the vacuum head unit ( Fig.2), remove the vacuum head unit from the collection tank.
4. Lay the head gently on the floor.
5. Insert the cartridge filter (3) into the float support (4) ( Fig.3).
6. Using the handle (2), on the vacuum tank lid, place the vacuum tank lid on the collection tank ( Fig.4).
7. Secure the vacuum head to the collection tank using the hooks (1) on the side of the collection tank ( Fig. 5).



### FRONT SQUEEGEE OPTIONAL FIXING KIT (ONLY FOR TOP VAC WD 60 VERSIONS)

To fix the front squeegee to the squeegee support, proceed as follows:

1. Take all necessary steps to ensure that the device is in a safe condition (see ["MACHINE SAFETY"](#)).

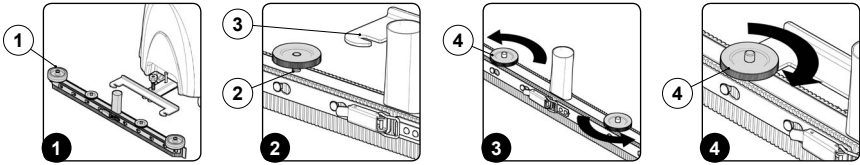
**⚠ ATTENTION:** You are advised to always wear protective gloves, to avoid the risk of serious injury to your hands.

**ⓘ ATTENTION:** Check that the front squeegee support is secured to the collection tank, and if not read the assembly instructions supplied with the "FRONT SQUEEGEE" kit.

2. Take hold of the front squeegee unit (1) (Fig.1).
3. Insert first the right-hand pin (2) of the squeegee in the right-hand slot (3) of the squeegee connection (Fig.2).

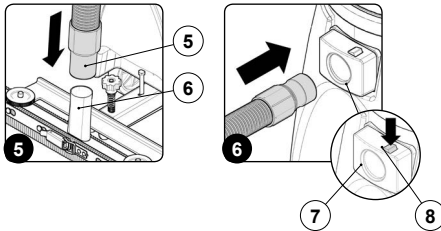
**ⓘ ATTENTION:** This operation can be simplified by first loosening the hand-wheel (4) on the pin (Fig.3).

4. Repeat the same operation for the left pin.
5. Then tighten the hand-wheels (4) to lock the squeegee in place (Fig.4).



6. Insert the vacuum hose (5) of the squeegee into the relative joint (6) of the vacuum nozzle (Fig.5).

7. Insert the vacuum hose from the vacuum nozzle (7) on the collection tank, before pulling the vacuum hose press the button (8) for unlocking the catch (Fig.6).

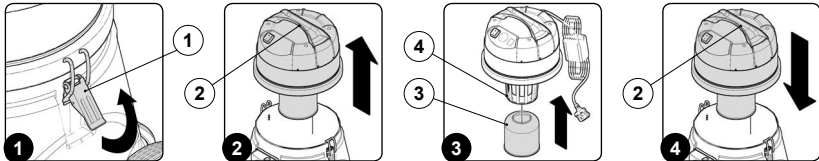


### PREPARING TO WORK

Before beginning to work, it is necessary to:

1. Before using, the appliance must be in order and safe to use with the work equipment, especially the power cable and the extension cable. If everything is not in order, the appliance must not be used.
2. Take all necessary steps to ensure that the device is in a safe condition (see ["MACHINE SAFETY"](#)).
3. Free the vacuum head from the collection tank by releasing the hooks (1) on the side of the collection tank (Fig.1).

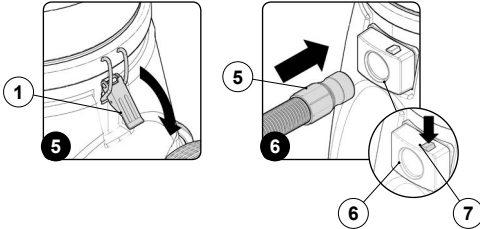
4. Using the handle (2) on the vacuum head unit (Fig.2), remove the vacuum head unit from the collection tank.
5. Lay the head gently on the floor.
6. Make sure that the sponge filter (3) has been correctly positioned above the filter cage (4) (Fig.3).
7. Depending on the type of work that needs to be done, select the type of filter to insert.
8. Using the handle (2), on the vacuum tank lid, place the vacuum tank lid on the collection tank (Fig.4).



- Secure the vacuum head to the collection tank using the hooks (1) on the side of the collection tank ( Fig. 5).
- Insert the vacuum hose (5) from the vacuum nozzle (6) on the collection tank, before inserting the vacuum hose press the button (7) for unlocking the catch (Fig.6).

- Select the most suitable accessory for the task at hand (see the chapter **"CHOOSING AND USING THE ACCESSORY"**).
- Insert the selected accessory into the vacuum hose.

**⚠ ATTENTION:** Never use the appliance without the filters supplied with the machine.



## WORK

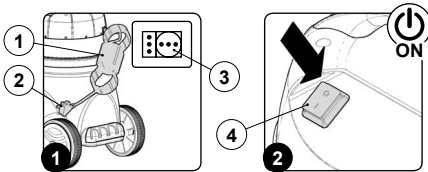
### VACUUM CLEANERS

To start working, proceed as follows:

- Carry out all the checks in the section **"PREPARING TO WORK"**.
- Insert the plug (1) of the power supply cable (2) in the mains supply socket (3) (Fig.1).
- Switch on the machine by positioning the main switch (4) to the work position "I" (Fig. 2).

- Proceed with the vacuuming.

**i ATTENTION:** If, when working, the intensity of the vacuum should drop, read the chapter **"CONTROL AND OPERATION"**.



### WET VACUUM CLEANER

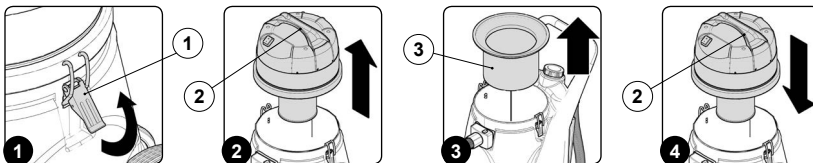
To start working, proceed as follows:

- Make all the checks listed in **"PREPARING TO WORK"**.
- Free the vacuum head from the collection tank by releasing the hooks (1) on the side of the collection tank, turn the levers as shown by the arrow in the picture (Fig.1).
- Using the handle (2) on the vacuum head unit, remove the vacuum head unit from the collection tank (Fig.2).
- Lay the head gently on the floor.
- Remove the fabric filter (3) (Fig.3).

**⚠ ATTENTION:** there must be no solid waste residue inside the collection tank.

- Using the handle (2) on the vacuum head unit, place the vacuum head unit above the collection tank (Fig.4).

**i ATTENTION:** Place the machine's power supply cable in the rear part of the tank.



- Secure the vacuum head to the collection tank using the hooks (1) on the side of the collection tank, turn the levers as shown by the arrow in the picture (Fig.5).
- Insert the plug (4) of the power supply cable (5) in the mains supply socket (6) (Fig.6).
- Switch on the machine by positioning the main switch (7) to the work position "I" (Fig. 7).
- Proceed with the vacuuming.

**ⓘ ATTENTION:** If, when working, the intensity of the vacuum should drop, read the chapter "[CONTROL AND OPERATION](#)".

The machine is fitted with a mechanical device (float) under the vacuum lid. When the collection tank is full, this device shuts off the air to the vacuum motor to protect it; you will recognise this condition by the deeper noise made by the motor. When you hear this sound, you must empty the collection tank (read "[CONTROLLING AND CLEANING THE COLLECTION TANK](#)").



### WET VACUUM CLEANERS WITH OPTIONAL FRONT SQUEEGEE KIT (VAC WD 60 VERSIONS)

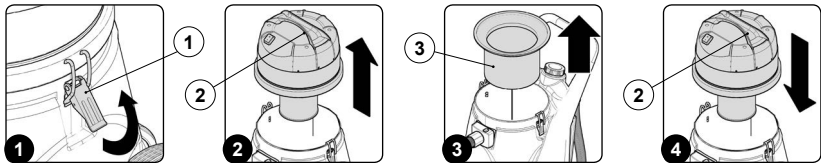
To start working, proceed as follows:

**⚠ ATTENTION:** there must be no solid waste residue inside the collection tank.

- Make all the checks listed in "[PREPARING TO WORK](#)".
- Free the vacuum head from the collection tank by releasing the hooks (1) on the side of the collection tank, turn the levers as shown by the arrow in the picture (Fig.1).
- Using the handle (2) on the vacuum head unit, remove the vacuum head unit from the collection tank (Fig.2).
- Lay the head gently on the floor.
- Remove the fabric filter (3) (Fig.3).

- Using the handle (2) on the vacuum head unit, place the vacuum head unit above the collection tank (Fig.4).

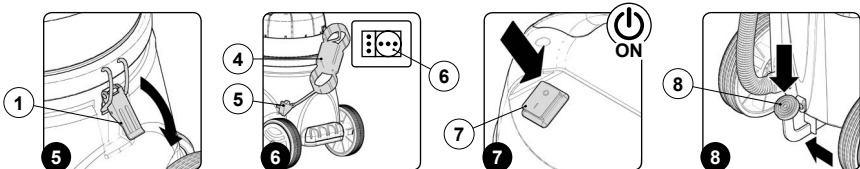
**ⓘ ATTENTION:** Place the machine's power supply cable in the rear part of the tank.



- Secure the vacuum head to the collection tank using the hooks (1) on the side of the collection tank, turn the levers as shown by the arrow in the picture (Fig.5).
- Insert the plug (4) of the power supply cable (5) in the mains supply socket (6) (Fig.6).
- Switch on the machine by positioning the main switch (7) to the work position "I" (Fig. 7).
- Bring the front squeegee into contact with the ground by lightly pressing downwards on the squeegee command pedal (8) then moving it to the left just enough to release it from the catch (Fig.8).
- Proceed with the vacuuming.

**ⓘ ATTENTION:** If, when working, the intensity of the vacuum should drop, read the chapter "[CONTROL AND OPERATION](#)".

The machine is fitted with a mechanical device (float) under the vacuum lid. When the collection tank is full, this device shuts off the air to the vacuum motor to protect it; you will recognise this condition by the deeper noise made by the motor. When you hear this sound, you must empty the collection tank (read "[CONTROLLING AND CLEANING THE COLLECTION TANK](#)").



## AT THE END OF WORK

At the end of the work, and before carrying out any type of maintenance, perform the following operations:

1. Do what is required to make sure the machine is in a safe condition (see [MACHINE SAFETY](#)”).
2. Take the appliance to the designated place for emptying the collection tank.

**(i) ATTENTION:** The place this operation is carried out should comply with current environmental protection regulations.

3. Empty the collection tank (see the section [“CHECKING AND CLEANING THE COLLECTION TANK”](#)”).
4. Remove the accessory from the extension, clean under running water.

**(i) ATTENTION:** When it is completely dry insert it into the accessories support at the rear of the collection tank (valid for P30 and P60 versions), or else insert it into the storage pocket at the rear of the collection tank (valid for P80 and P100 versions).

5. Remove the female part of the extension from the male part, clean it under running water.

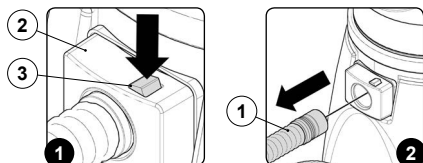
**(i) ATTENTION:** When it is completely dry insert it into the accessories support at the rear of the collection tank (valid for P30 and P60 versions), or else insert it into the storage pocket at the rear of the collection tank (valid for P80 and P100 versions).

6. Remove the vacuum hose (1) (**Fig.2**) from the vacuum nozzle (2) on the collection tank; before pulling the vacuum hose press the button (3) for unlocking the catch (**Fig.1**).

7. Remove the front squeegee (if fitted) and clean off any impurities (read [“OPTIONAL FRONT SQUEEGEE CONTROL AND CLEANING KIT \(TOP P80 AND P100 VERSIONS\)”](#)”).

8. Take the appliance to the designated storage area.

**(H) ATTENTION:** Park the appliance in an enclosed place, on a flat surface; near the appliance there must be no objects that could either damage it, or be damaged through contact with it.



## MAINTENANCE

### RECOMMENDED MAINTENANCE OPERATIONS

TYPE OF MAINTENANCE	AT THE END OF WORK	DAILY	WEEKLY	BEFORE A LONG PERIOD WHEN IT WILL NOT BE USED	TRANSPORTING
Controlling and cleaning the collection tank	X	X		X	X
Controlling and cleaning the vacuum accessories unit	X			X	
Front squeegee optional control and cleaning kit	X	X		X	
Controlling and cleaning the fabric filter			X	X	
Controlling and cleaning the sponge filter			X	X	
Controlling and cleaning the float			X	X	
Controlling and cleaning the cartridge filter (optional)			X	X	
Controlling and cleaning the nylon filter			X	X	

## CONTROLLING AND CLEANING THE COLLECTION TANK

To empty the collection tank, proceed as follows:

1. Take the device to its maintenance area.

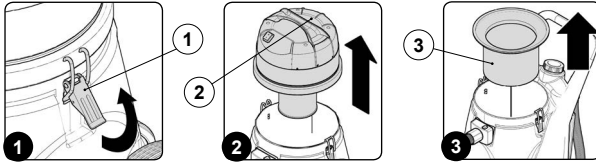
**(i) ATTENTION:** The place this operation is carried out should comply with current environmental protection regulations.

2. Take all necessary steps to ensure that the device is in a safe condition (see [MACHINE SAFETY](#)™).



**ATTENTION:** You are advised to always wear protective gloves, to avoid the risk of serious injury to your hands.

3. Free the vacuum head from the collection tank by releasing the hooks (1) on the side of the collection tank (**Fig.1**).
4. Using the handle (2) on the vacuum head unit (**Fig.2**), remove the vacuum head unit from the collection tank.
5. Lay the head gently on the floor.
6. If present, remove the fabric filter (3) (**Fig.3**).

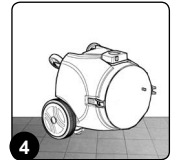


If you have the VAC WD 20 and VAC WD 40 versions, proceed as follows:

- I. Turn the collection tank to bring the loading mouth in contact with the floor (**Fig.4**).
- II. Remove the dirt from the collection tank.

**(i) ATTENTION:** If you are using the paper collection bag-filter (optional) check that it is not full, if it is, change it.

- III. Clean the inside of the collection tank with a damp cloth.

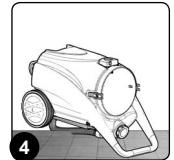


If you have the VAC WD 60 versions and you want to empty the tank of solid waste, proceed as follows:

- A. Use the transportation handle to turn the collection tank to bring the handle in contact with the floor (**Fig.5**).
- B. Remove the dirt from the collection tank.

**(i) ATTENTION:** If you are using the paper collection bag-filter (optional) check that it is not full, if it is, change it.

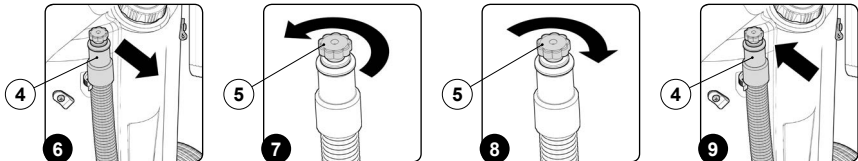
- C. Clean the inside of the collection tank with a damp cloth.



If you have the VAC WD 60 versions and you want to empty the tank of liquid waste, proceed as follows:

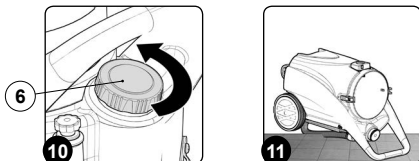
- i. Remove the collection tank drainage tube (4) on the back of the machine from its restraint (**Fig.6**).
- ii. Unscrew the drainage cap (5) in the drainage hose (4) (**Fig.7**).

- iii. Position the pipe on the discharge surface and empty the collection tank.
- iv. Once the solution in the collection tank has been drained, screw the drainage cap (5) onto the drainage hose (4) (**Fig.8**).
- v. Fix the drainage pipe (4) to the restraint on the collection tank (**Fig.9**).



- vi. Remove the collection tank vent cap (6), rotate it in the direction indicated by the arrow (**Fig.10**).
- vii. Use the transportation handle to turn the collection tank to bring the handle in contact with the floor (**Fig.11**).

- viii. Clean the inside of the collection tank with a damp cloth.
7. Repeat the operations in reverse order to reassemble all the parts.



### CONTROLLING AND CLEANING THE VACUUM ACCESSORIES UNIT

Cleaning the entire vacuum unit properly ensures a longer lifespan for the vacuum motor. To carry out the cleaning of the vacuum accessories unit, proceed as follows:

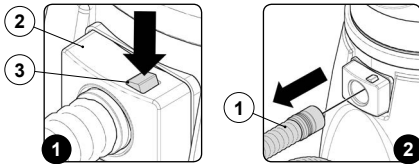
1. Do what is required to make sure the machine is in a safe condition (see **MACHINE SAFETY™**).
2. Take the appliance to its designated maintenance area.

**ATTENTION:** The place this operation is carried out should comply with current environmental protection regulations.



**ATTENTION:** You are advised to always wear protective gloves, to avoid the risk of serious injury to your hands.

3. Remove the accessory from the extension, clean it under running water.



**ATTENTION:** When it is completely dry insert it into the accessories support at the rear of the collection tank (valid for P30 and P60 versions), or else insert it into the storage pocket at the rear of the collection tank (valid for P80 and P100 versions).

4. Remove the female part of the extension from the male part, clean it under running water.

**ATTENTION:** When it is completely dry insert it into the accessories support at the rear of the collection tank (valid for P30 and P60 versions), or else insert it into the storage pocket at the rear of the collection tank (valid for P80 and P100 versions).

5. Remove the vacuum hose (1) (Fig.2) from the vacuum nozzle (2) on the collection tank; before pulling the vacuum hose press the button (3) for unlocking the catch (Fig.1).

### FRONT SQUEEGEE OPTIONAL CONTROL AND CLEANING KIT (VAC WD 60 VERSIONS)

Proper cleaning of the whole front squeegee optional kit ensures better drying of the floor, as well as a longer vacuum motor life. To carry out the cleaning of the squeegee unit, proceed as follows:



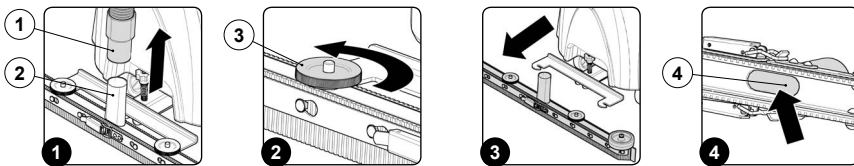
**ATTENTION:** these operations must be carried out using protective gloves to avoid any possible contact with the edges or tips of metal objects.

1. Take the device to the dedicated maintenance area.

**ATTENTION:** The place this operation is carried out should comply with current environmental protection regulations.

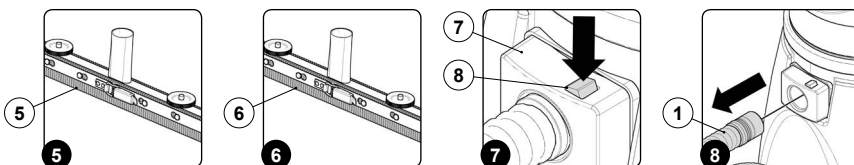
2. Take all necessary steps to ensure that the device is in a safe condition (see **MACHINE SAFETY™**).

3. Remove the vacuum hose (1) from the vacuum nozzle (2) on the squeegee body (Fig.1).
4. Fully loosen the knobs (3) in the squeegee body pre-assembly (Fig.2).
5. Remove the squeegee body from the slits in the squeegee connector (Fig.3).
6. First with a jet of water and then with a damp cloth, thoroughly clean the vacuum chamber (4) of the squeegee unit (Fig.4).



7. First with a jet of water and then with a damp cloth, thoroughly clean the front rubber blade (5) of the squeegee unit (Fig.5).
8. First with a jet of water and then with a damp cloth, thoroughly clean the rear rubber blade (6) of the squeegee unit (Fig.6).

9. Remove the vacuum hose (1) (Fig.8) from the vacuum nozzle (7) on the collection tank; before pulling the vacuum hose, press the button (8) for unlocking the catch (Fig.7).
10. Repeat the operations in reverse order to reassemble all the parts.



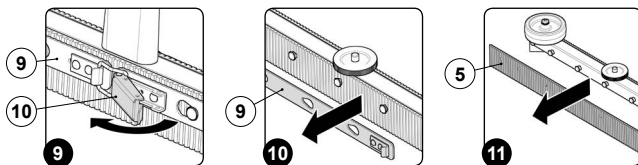
Check the wear of the front rubber blade on the squeegee body; if the edge of the rubber that is in contact with the floor is worn replace it as follows:

1. Take the device to the dedicated maintenance area.

**ATTENTION:** The place this operation is carried out should comply with current environmental protection regulations.

2. Take all necessary steps to ensure that the device is in a safe condition (see **MACHINE SAFETY**™).

**ATTENTION:** these operations must be carried out using protective gloves to avoid any possible contact with the edges



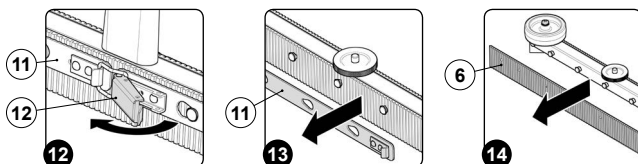
Check the wear of the rear rubber blade on the squeegee body; if the edge of the rubber that is in contact with the floor is worn replace it as follows:

1. Take the device to the dedicated maintenance area.

**ATTENTION:** The place this operation is carried out should comply with current environmental protection regulations.

2. Take all necessary steps to ensure that the device is in a safe condition (see **MACHINE SAFETY**™).

**ATTENTION:** these operations must be carried out using protective gloves to avoid any possible contact with the edges



or tips of metal objects.

3. Remove the vacuum hose (1) from the vacuum nozzle (2) on the squeegee body (**Fig.1**).
4. Fully loosen the knobs (3) in the squeegee body pre-assembly (**Fig.2**).
5. Remove the squeegee body from the slits in the squeegee connector (**Fig.3**).
6. Free the rubber-pressing blades (9) from the squeegee body, by releasing the hook (10) (**Fig.9**).
7. Remove the front rubber-pressing blades (9) (**Fig.10**).
8. Remove the rubber (5) and replace it (**Fig.11**).
9. Proceed in reverse to replace the rubber.

or tips of metal objects.

3. Remove the vacuum hose (1) from the vacuum nozzle (2) on the squeegee body (**Fig.1**).
4. Fully loosen the knobs (3) in the squeegee body pre-assembly (**Fig.2**).
5. Remove the squeegee body from the slits in the squeegee connector (**Fig.3**).
6. Free the rear rubber-pressing blades (11) from the squeegee body, using the hook (12) (**Fig.12**).
7. Remove the front rubber-pressing blades (11) (**Fig.13**).
8. Remove the rubber (6) and replace it (**Fig.14**).
9. Proceed in reverse to replace the rubber.

### CONTROLLING AND CLEANING THE FABRIC FILTER

The careful cleaning of the fabric filter guarantees a longer life span of the appliance's vacuum circuit, ensuring a better floor cleaning performance. To clean the fabric filter, proceed as follows:

1. Take the device to its maintenance area.

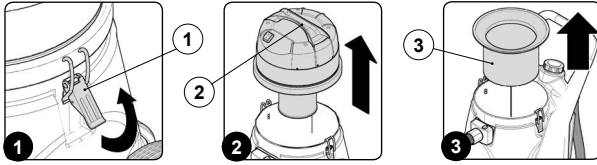
**ATTENTION:** The place this operation is carried out should comply with current environmental protection regulations.

2. Take all necessary steps to ensure that the device is in a safe condition (see **MACHINE SAFETY**™).

**ATTENTION:** You are advised to always wear protective gloves, to avoid the risk of serious injury to your hands.

3. Free the vacuum head from the collection tank by releasing the hooks (1) on the side of the collection tank (**Fig.1**).
4. Using the handle (2) on the vacuum head unit (**Fig.2**), remove the vacuum head unit from the collection tank.
5. Lay the head gently on the floor.
6. Remove the fabric filter (3) (**Fig.3**).
7. Vacuum the fabric filter with another vacuum cleaner.
8. Clean the fabric filter with an air jet from a distance of more than 20cm.
9. To refit the fabric filter carry out the operations in the reverse order.





### CONTROLLING AND CLEANING THE SPONGE FILTER

The careful cleaning of the sponge filter guarantees a longer life span of the appliance's vacuum circuit, ensuring a better floor cleaning performance. To clean the sponge filter, proceed as follows:

1. Take the device to its maintenance area.

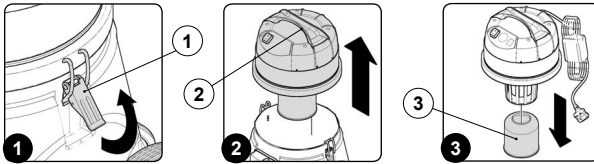
**(i) ATTENTION:** The place this operation is carried out should comply with current environmental protection regulations.

2. Take all necessary steps to ensure that the device is in a safe condition (see [MACHINE SAFETY™](#)).



**ATTENTION:** You are advised to always wear protective gloves, to avoid the risk of serious injury to your hands.

3. Free the vacuum head from the collection tank by releasing the hooks (1) on the side of the collection tank (Fig.1).
4. Using the handle (2) on the vacuum head unit (Fig.2), remove the vacuum head unit from the collection tank.
5. Remove the sponge filter (3) (Fig.3).
6. Vacuum the fabric filter with another vacuum cleaner.
7. Clean the fabric filter with an air jet from a distance of more than 20cm.
8. To refit the sponge filter carry out the operations in the reverse order.



### CONTROLLING AND CLEANING THE FLOAT

The careful cleaning of the float guarantees a longer life span of the appliance's vacuum circuit, ensuring a better floor cleaning performance. To clean the float, proceed as follows:

1. Take the device to its maintenance area.

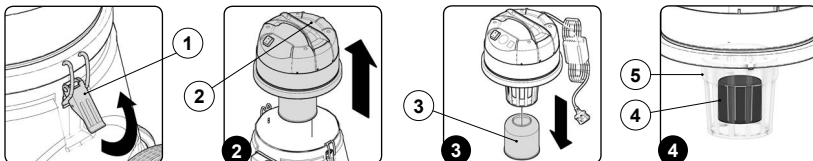
**(i) ATTENTION:** The place this operation is carried out should comply with current environmental protection regulations.

2. Take all necessary steps to ensure that the device is in a safe condition (see [MACHINE SAFETY™](#)).



**ATTENTION:** You are advised to always wear protective gloves, to avoid the risk of serious injury to your hands.

3. Free the vacuum head from the collection tank by releasing the hooks (1) on the side of the collection tank (Fig.1).
4. Using the handle (2) on the vacuum head unit (Fig.2), remove the vacuum head unit from the collection tank.
5. Remove the sponge filter (3) (Fig.3).
6. With a damp cloth clean the float (4) inside the filter cage (5) (Fig.4).
7. Proceed in reverse order to replace the vacuum head.



### CONTROLLING AND CLEANING THE CARTRIDGE FILTER (OPTIONAL)

Careful cleaning of the cartridge filters guarantees a longer life span of the appliance's vacuum circuit, ensuring a better floor cleaning performance. To clean the cartridge filter, proceed as follows:

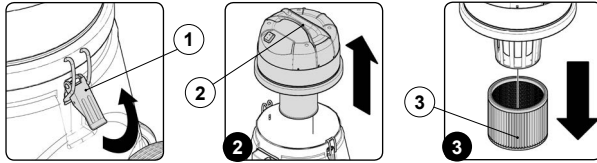
1. Take the device to its maintenance area.

**(i) ATTENTION:** *The place this operation is carried out should comply with current environmental protection regulations.*

2. Take all necessary steps to ensure that the device is in a safe condition (see [MACHINE SAFETY](#)<sup>TM</sup>).

**(⚠) ATTENTION:** *You are advised to always wear protective gloves, to avoid the risk of serious injury to your hands.*

3. Free the vacuum head from the collection tank by releasing the hooks (1) on the side of the collection tank (**Fig.1**).
4. Using the handle (2) on the vacuum head unit (**Fig.2**), remove the vacuum head unit from the collection tank.
5. Remove the cartridge filter (3) (**Fig.3**).
6. Vacuum the cartridge filter with another vacuum cleaner.
7. Clean the cartridge filter with an air jet from a distance of at least 20 cm.
8. To refit the cartridge filter carry out the operations in the reverse order.



### CONTROLLING AND CLEANING THE NYLON FILTER (OPTIONAL)

The careful cleaning of the nylon filter guarantees a longer life span of the appliance's vacuum circuit, ensuring a better floor cleaning performance. To clean the nylon filter, proceed as follows:

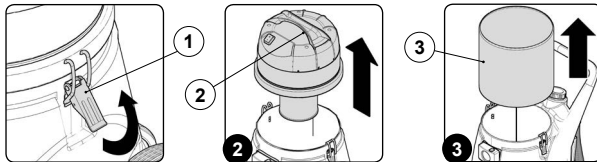
1. Take the device to its maintenance area.

**(i) ATTENTION:** *The place this operation is carried out should comply with current environmental protection regulations.*

2. Take all necessary steps to ensure that the device is in a safe condition (see [MACHINE SAFETY](#)<sup>TM</sup>).

**(⚠) ATTENTION:** *You are advised to always wear protective gloves, to avoid the risk of serious injury to your hands.*

3. Free the vacuum head from the collection tank by releasing the hooks (1) on the side of the collection tank (**Fig.1**).
4. Using the handle (2) on the vacuum head unit (**Fig.2**), remove the vacuum head unit from the collection tank.
5. Lay the head gently on the floor.
6. Remove the nylon filter (3) (**Fig.3**).
7. Vacuum the nylon filter with another vacuum cleaner.
8. Clean the nylon filter with an air jet from a distance of more than 20cm.
9. To refit the nylon filter carry out the operations in the reverse order.



## CONTROL AND OPERATION

This chapter lists the most common problems linked with the use of the appliance. If you are unable to resolve the problems with the information given here, please contact your nearest assistance centre.

PROBLEM	POSSIBLE CAUSE	SOLUTION
THE APPLIANCE DOES NOT SWITCH ON.	The main switch is in the rest position.	Place the main switch on "I".
	The power cable extension is not connected to the mains socket.	Connect the power cable plug to the mains socket.
	The appliance's electronic specifications do not match the mains supply specifications.	Check that the technical information on the serial number plate correspond to the mains supply information.
	The power cable is damaged.	If the power cable is damaged replace it, immediately contact an authorised ICE technical assistance centre.
DUST COMING OUT DURING VACUUMING.	The vacuum hose is not properly connected to the vacuum nozzle.	Connect the vacuum hose to the nozzle on the collection tank.
	The vacuum hose is not properly connected to the accessory in contact with the floor.	Connect the vacuum hose to the accessory that is being used to do the vacuuming.
	The vacuum head is not positioned correctly.	Place the vacuum head on top of the collection tank and secure it using the side hooks.
	The collection bag-filter has not been positioned correctly.	Correctly position the collection bag-filter, read the section " <a href="#">INSERTING PAPER COLLECTION BAG-FILTER(OPTIONAL)</a> " or else " <a href="#">INSERTING NYLON COLLECTION BAG-FILTER (OPTIONAL VALID FOR VAC WD 60 VERSIONS)</a> ".
	The collection bag-filter is full or has torn.	Replace the collection bag-filter.
	The fabric filter is not correctly positioned.	Remove the vacuum head from the collection tank and position the fabric filter correctly.
	The fabric filter is clogged or has torn.	Remove the vacuum head from the collection tank and carry out the maintenance of the fabric filter, read the section " <a href="#">CONTROLLING AND CLEANING THE FABRIC FILTER</a> ".
	The sponge filter is not correctly positioned.	Remove the vacuum head from the collection tank and position the sponge filter correctly.
	The sponge filter is clogged or has torn.	Remove the vacuum head from the collection tank and carry out the maintenance of the cartridge filter, read the section " <a href="#">CONTROLLING AND CLEANING THE SPONGE FILTER</a> ".
	The cartridge filter (optional) is not correctly positioned.	Remove the vacuum head from the collection tank and position the cartridge filter correctly.
	The cartridge filter (optional) is clogged.	Remove the vacuum head from the collection tank and carry out the maintenance of the cartridge filter, read the section " <a href="#">CONTROLLING AND CLEANING THE CARTRIDGE FILTER</a> ".
	The nylon filter (optional) is not correctly positioned.	Remove the vacuum head from the collection tank and position the nylon filter correctly.
The nylon filter (optional) is clogged or has torn.	Remove the vacuum head from the collection tank and carry out the maintenance of the cartridge filter, read the section " <a href="#">CONTROLLING AND CLEANING THE NYLON FILTER (OPTIONAL)</a> ".	

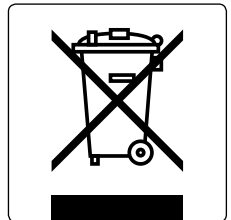
PROBLEM	POSSIBLE CAUSE	SOLUTION
THE VACUUM CAPACITY IS INSUFFICIENT	The vacuum hose is blocked.	Check that there is nothing obstructing the vacuum hose, if there is, remove it.
	The vacuum chamber of the accessory in contact with the floor is blocked.	Check that there is nothing obstructing the vacuum chamber of the accessory being used, if there is, remove it.
	The vacuum hose is not properly connected to the vacuum nozzle.	Connect the vacuum hose to the nozzle on the collection tank.
	The vacuum hose is not properly connected to the accessory in contact with the floor.	Connect the vacuum hose to the accessory that is being used to do the vacuuming.
	The vacuum head is not positioned correctly.	Place the vacuum head on top of the collection tank and secure it using the side hooks.
	The fabric filter is clogged or has torn.	Remove the vacuum head from the collection tank and carry out the maintenance of the fabric filter, read the section " <a href="#">CONTROLLING AND CLEANING THE FABRIC FILTER</a> ".
	The sponge filter is clogged or has torn.	Remove the vacuum head from the collection tank and carry out the maintenance of the cartridge filter, read the section " <a href="#">CONTROLLING AND CLEANING THE SPONGE FILTER</a> ".
	The cartridge filter (optional) is clogged.	Remove the vacuum head from the collection tank and carry out the maintenance of the cartridge filter, read the section " <a href="#">CONTROLLING AND CLEANING THE CARTRIDGE FILTER</a> ".
	The nylon filter (optional) is clogged or has torn.	Remove the vacuum head from the collection tank and carry out the maintenance of the cartridge filter, read the section " <a href="#">CONTROLLING AND CLEANING THE NYLON FILTER (OPTIONAL)</a> ".

## DISPOSAL

To dispose of the appliance, take it to a demolition centre or an authorised collection centre. Before scrapping the appliance, it is necessary to remove and separate out the following materials, then send them to the appropriate collection centres in accordance with applicable environmental hygiene regulations:

- Electric and electronic parts\*
- Plastic parts
- Metallic parts

(\*) In particular, contact your distributor when scrapping electric and electronic parts.



## EC DECLARATION OF CONFORMITY



The undersigned company:

**Industrial Cleaning Equipment Ltd.**  
Sauber House, Unit 3, Rushington Business Park  
Chapel Lane, Totton, Hampshire, SO40 9AH

Declares under its sole responsibility that the products

### **WET AND DRY VACUUM CLEANERS mod. VAC WD 20 - VAC WD 40 - VAC WD 60**

Comply with the requirements of the following Directives:

- 2006/42/CE (+2009/127/CE)
- 2004/108/CE
- 2011/65/UE
- 2009/125/CE (for dry vacuum cleaners only)

Harmonised rules applied:

- EN 55014-1: 2006+A1: 2009+A2: 2011
- EN 55014-2: 1997+A1: 2001+A2: 2008
- EN 60335-1
- EN 60335-2-69
- EN 61000-3-2: 2006+A1: 2009+A2: 2009
- EN 61000-3-3: 2013
- EN 62233: 2008
- EN 50581
- EN 60312: 2013 (for dry vacuum cleaners only)

Regulations applied:

- 666/2013 (for dry vacuum cleaners only)

The person authorized to compile the technical file:

Mr. Mark Bresnihan  
Sauber House, Unit 3, Rushington Business Park  
Chapel Lane, Totton, Hampshire, SO40 9AH

Chapel Lane, 01/02/2017

**Industrial Cleaning Equipment Ltd.**  
Legal representative  
Mark Bresnihan

#### **Manufacturer:**

**TMB s.r.l.**

Via Cà Nova Zampieri 5  
37057 San Giovanni Lupatoto (VR) Italy  
Tel. +39 045 8774299 - Fax. +39 045 8774245  
E-mail: [tmb@tmbvac.it](mailto:tmb@tmbvac.it)  
Web: [www.tmbvacuum.com](http://www.tmbvacuum.com)

#### **Mandatory:**

**Industrial Cleaning Equipment Ltd.**

Sauber House, Unit 3, Rushington Business Park  
Chapel Lane, Totton, Hampshire, SO40 9AH  
Tel. 0800 389 3869 - Fax. 023 8042 8318  
E-mail: [info@ice-clean.com](mailto:info@ice-clean.com)  
Web: [www.ice-clean.com](http://www.ice-clean.com)



**NOTE**

A large rectangular area with horizontal lines, intended for taking notes. The lines are evenly spaced and cover the majority of the page's content area.





**Industrial Cleaning Equipment Ltd.**  
Sauber House, Unit 3, Rushington Business Park - Chapel Lane, Totton, Hampshire, SO40 9AH  
Service 0800 389 3869 - Facsimile 023 8042 8318 - Email [info@ice-clean.com](mailto:info@ice-clean.com)