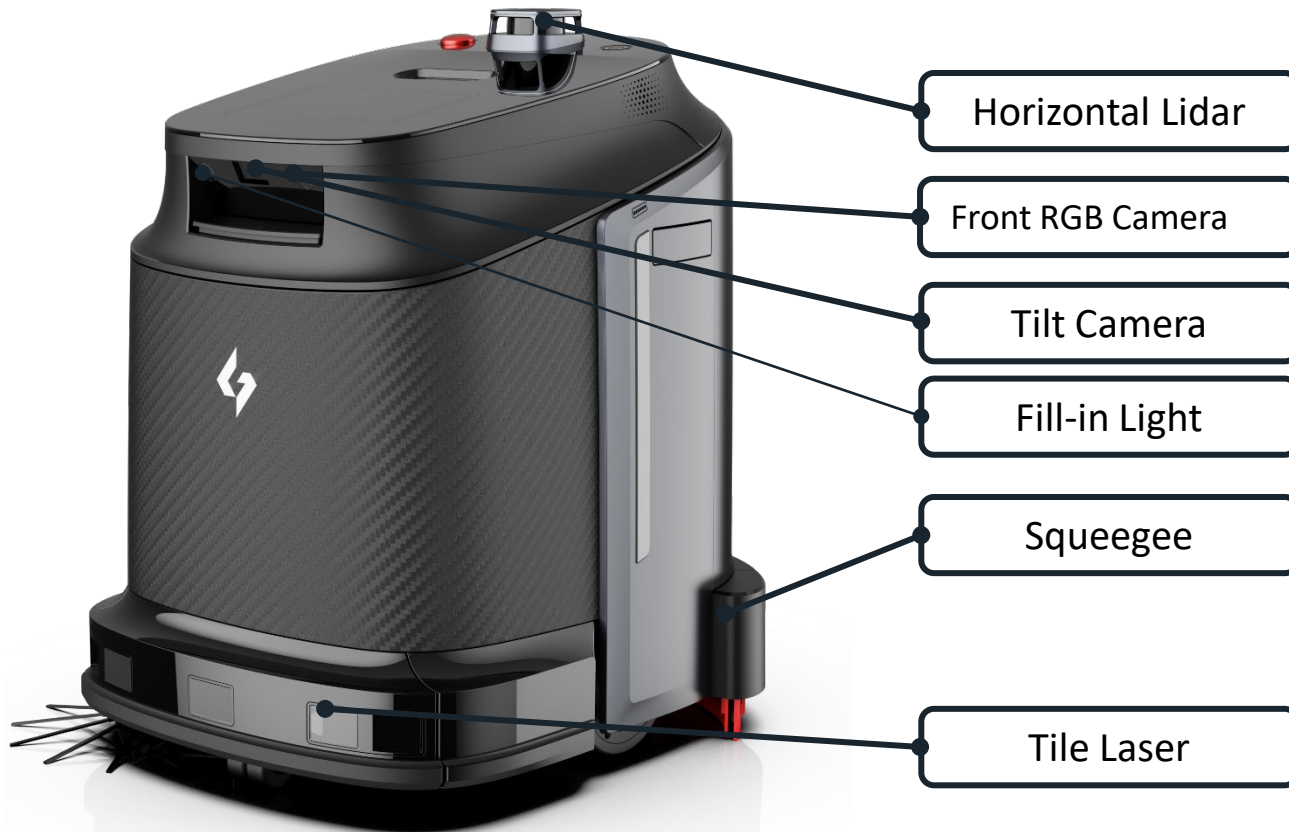




Phantas User Manual





[Horizontal Lidar]

Map scanning, locating and obstacle avoidance

[Front RGB Camera]

Cruising with cleaning, obstacle avoidance and capture real-time colorful image.

[Tilt Camera]

Ranging, obstacle avoidance and capture real-time colorful image.

[Fill-in Light]

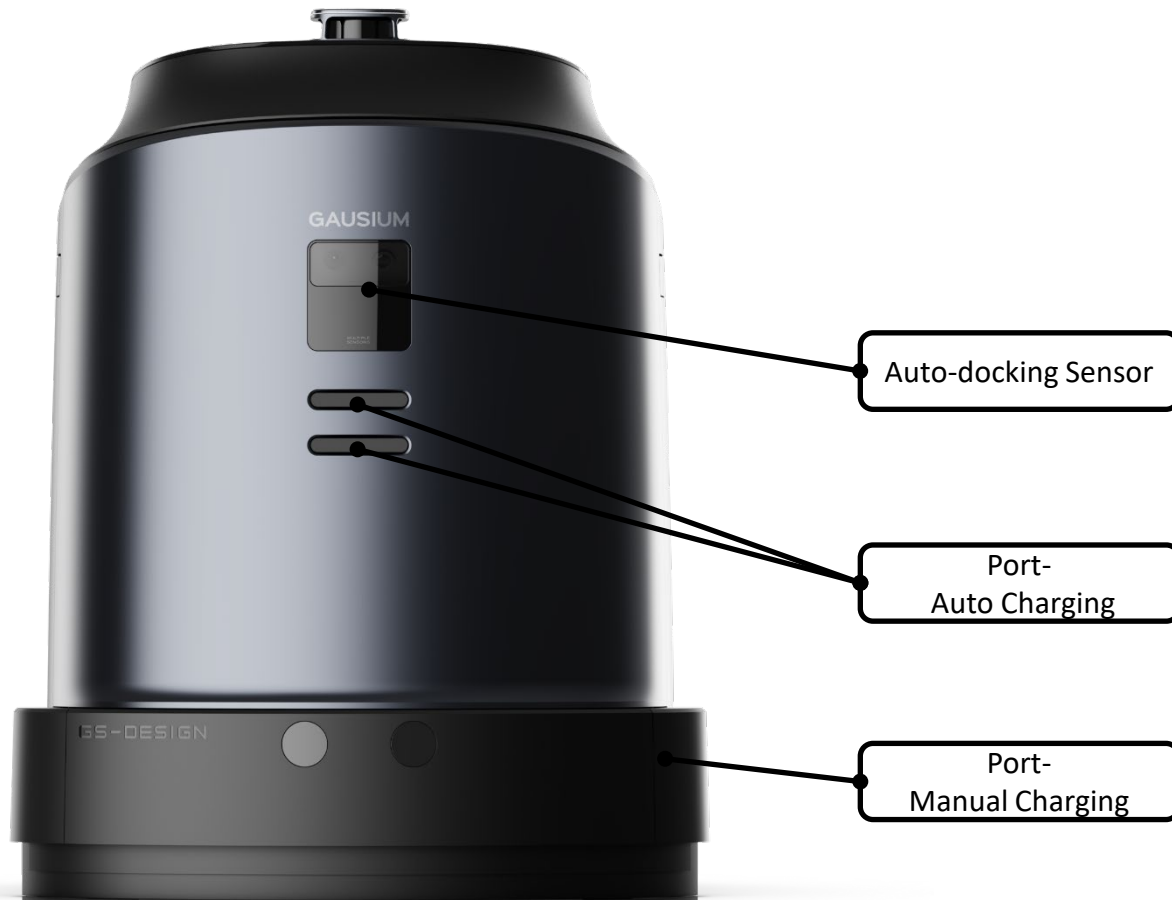
Fill in the light for front camera to assist cruising.

[Squeegee Assembly]

Scrubbing the floor and absorbing water stain.

[Tile Laser]

Obstacle avoidance and ranging.



[Auto-docking Sensor]

Assist auto-docking

[Port - Auto Charging]

The ports for auto-charging

[Port - Manual Charging]

The port for manual charging (Open the side protection rubber skirt of squeegee to get access to it)




1.Main Power Breaker

The main power breaker is positioned above the right wheel.

(“O” means off, “—” means on)



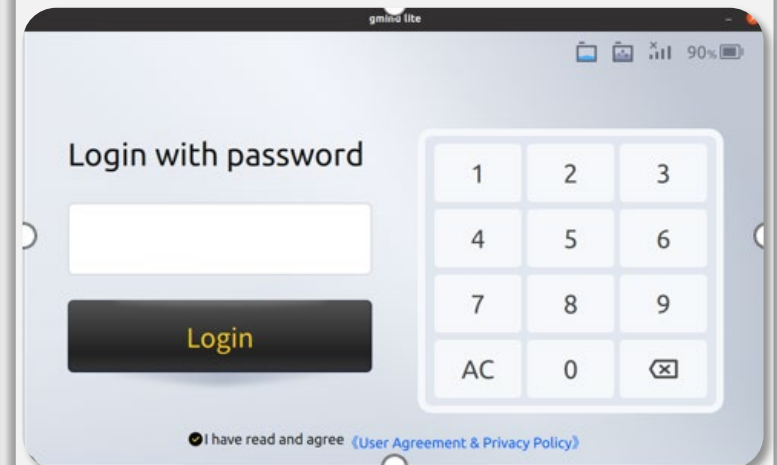
2.Power On

Long press the button  for 5 seconds, screen will be turned on and you will hear the voice prompt.



3.Log-in

The boot-up sequence takes nearly 90~120 seconds. Then log-in interface will appear. Input the password and click “log in”.

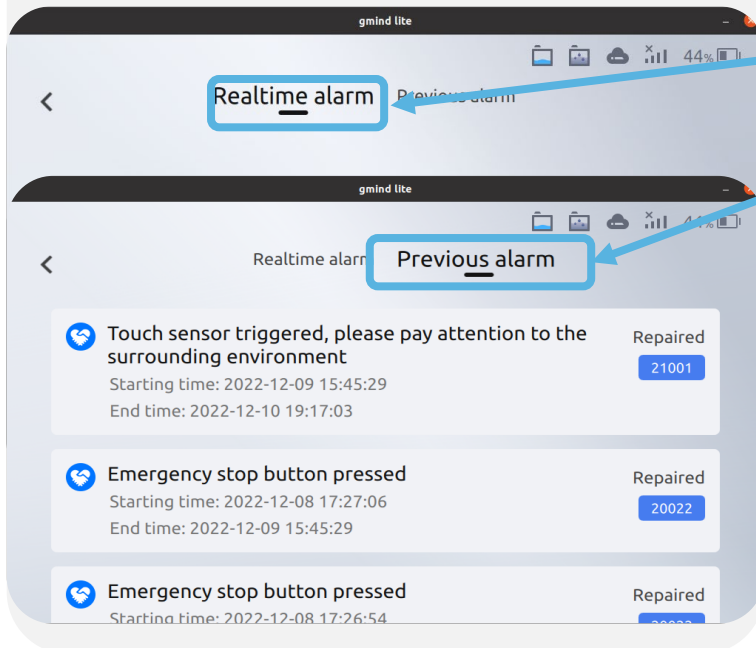


4. Health Status & Alarms

Click the lower left corner to check alarms.

No alarm means the robot is fine and functions well.

Resolve the issues following the prompts.

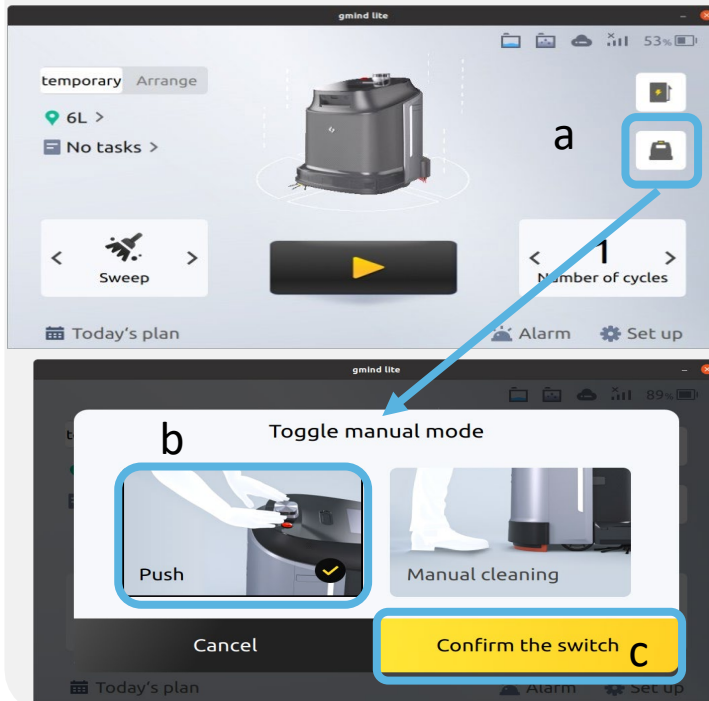


[Call Service]

If the issues cannot be resolved following the prompts, please contact with our service personnel, we will help you figure them out asap.

1.Switch to Manual Push Mode

Click [a]Manual Mode, [b]Push,
[c]Confirm



2.Move Manully

Hold the robot with your hands, move it
to storage place.



3.Power Off

Turn off the switch to "O" and turn off
the circuit breaker.



4.Open Top Lid

Press down“Open”button to open the top lid.



5.Take out water tank/dust tank

Take out the water tank / dust tank and clean them.



[Notice for long-term storage]

Clean the consumables if you want to store the robot for a long time.

Empty clean water tank and wastewater tank, remove rubber strips of squeegee.

Store them together in dry and ventilated place after cleaning.

1.Switch to Manual Mode

Click [a]Manual Mode, [b]Push,
[c]Confirm



2.Move Robot to charging dock



3.Start Charging

Insert the plug into the port of robot,
then connect the plug with power supply.

The red indicator flashes when charging
starts.



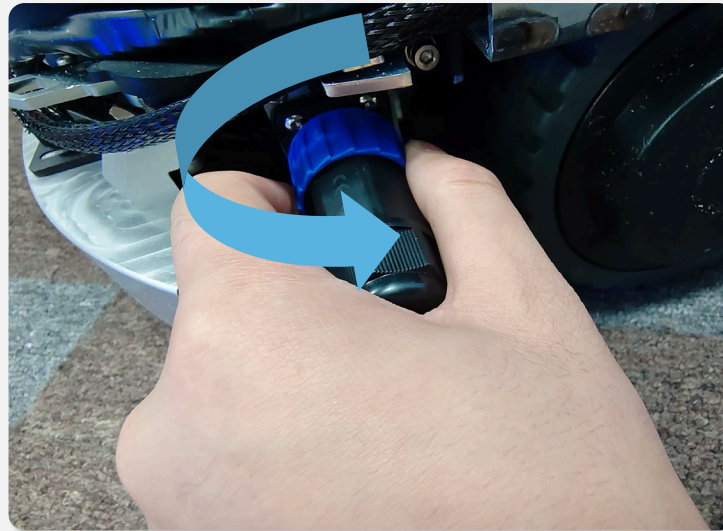
4. Fully Charged

The indicator turns green when robot is fully charged.



5. Remove Plug

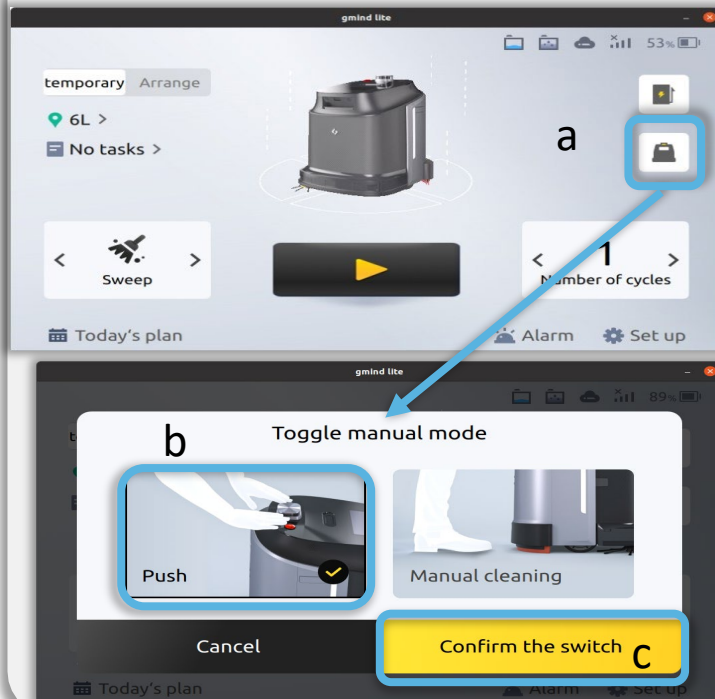
Cut off power supply first, then remove plug from port.



Notice: Turn the blue coupling counterclockwise to unlock the plug.

1.Switch to Manual Mode

Click “Manual Mode”, “Push” and “Confirm”



2.Move Robot to Maintenance Point

Hold the 2 sides of robot and push it to maintenance point.



3.Open Top Lid

Press down the button “Open” to uncover the top lid.



4. Take Out Wastewater Tank & Drain

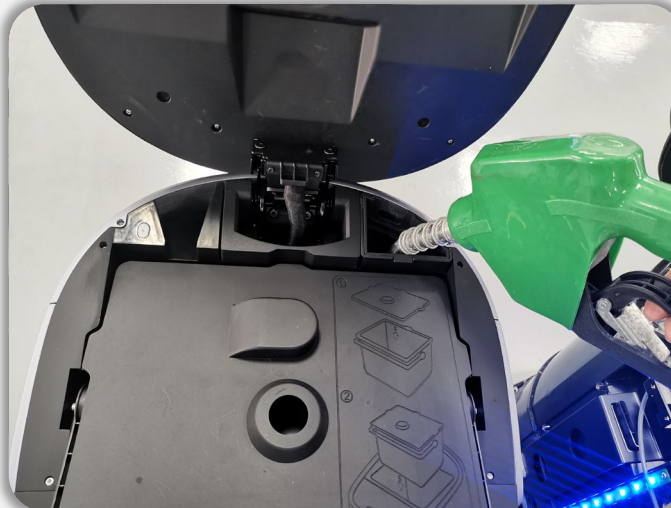
Open top lid, take out the wastewater tank and pour out the wastewater. Then clean it and put it back into robot.



5. Add Clean Water

The clean water inlet is in the upper right corner. Use hose or measuring cup to add water manually.

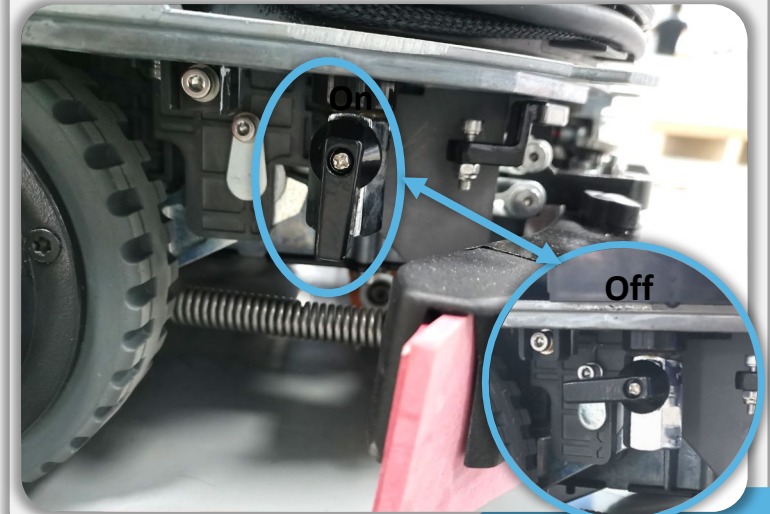
Notice: aware water spill or overflow when adding water.



6. Empty Clean Water Tank

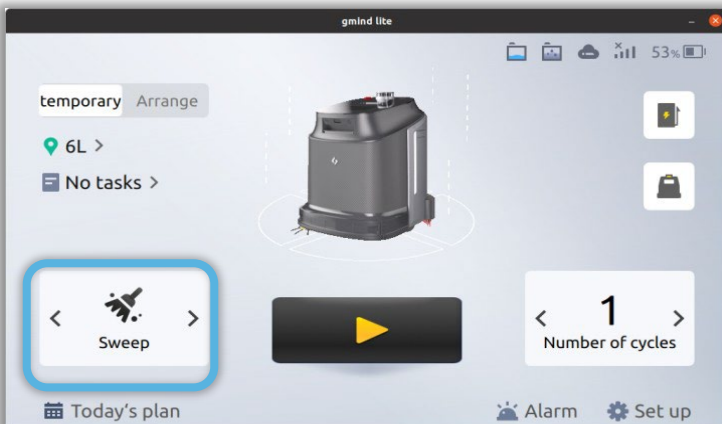
There is a valve behind the left wheel that is for draining clean water.

Move robot to a proper place and turn on the valve to empty the water tank if necessary. (It takes 3-4 minutes)



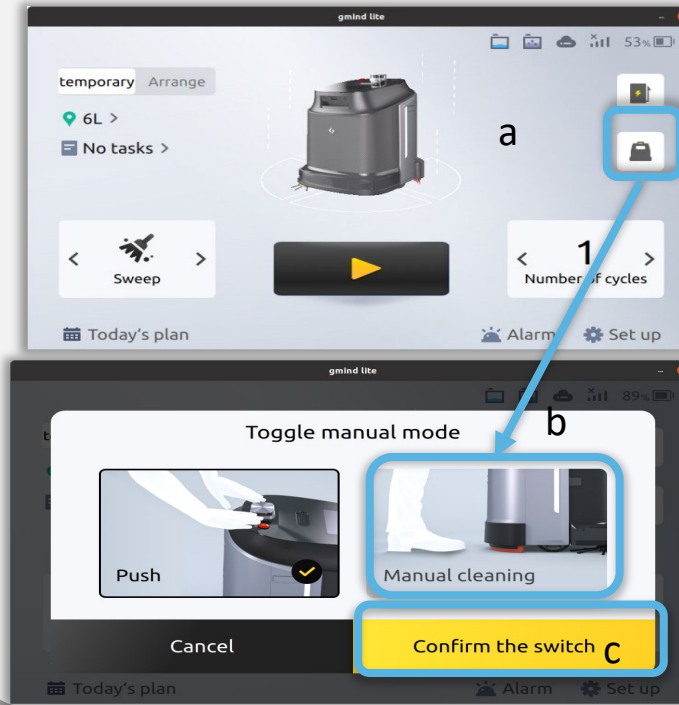
1. Select Cleaning Mode

Select a cleaning mode (scrubbing, dust mopping, sweeping, vacuuming).



2. Switch to Manual Mode

Click "Manual Mode", "Manual Cleaning" and "Confirm"



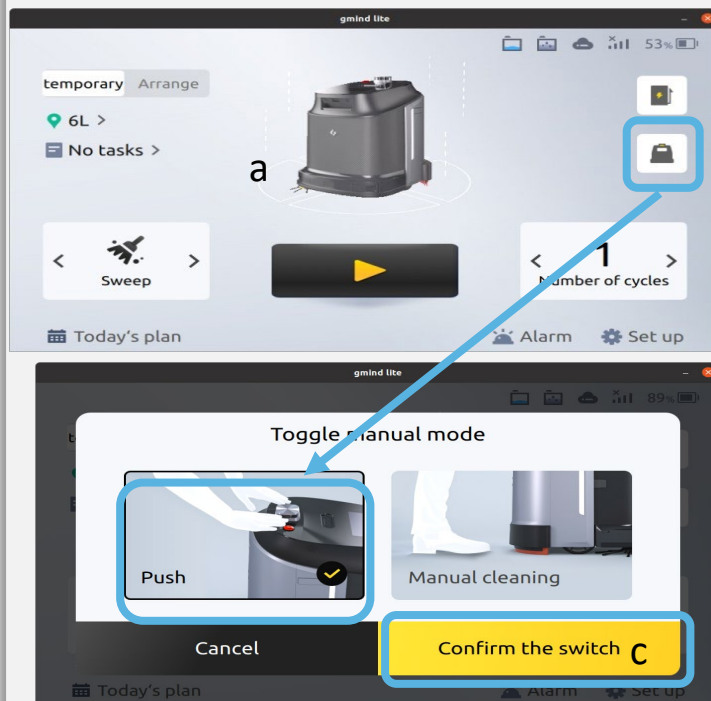
3. Manual Operation

Push robot slowly to do manual cleaning operation.



4.End Manual Operation

Click “Manual Mode”, “Push” and “Confirm”



5.Clean Waster Stain

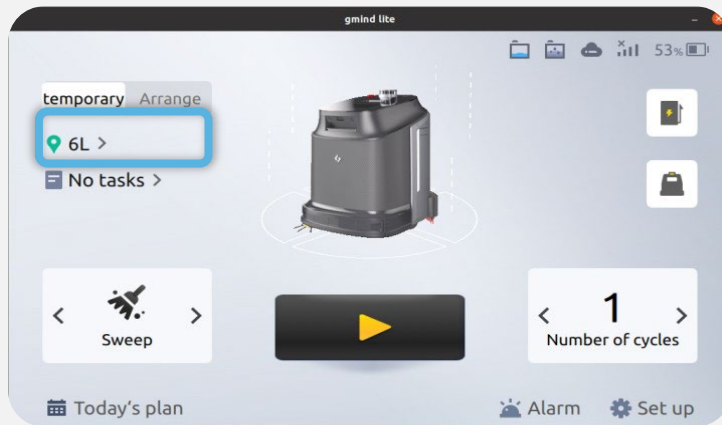
To prevent water contamination after manual mode ends, suction & squeegee will keep working for a while. Continue to slowly push robot for 1-2 meters to clean the water stain.

- The suction and squeegee keep working 30 seconds of delay (by default)



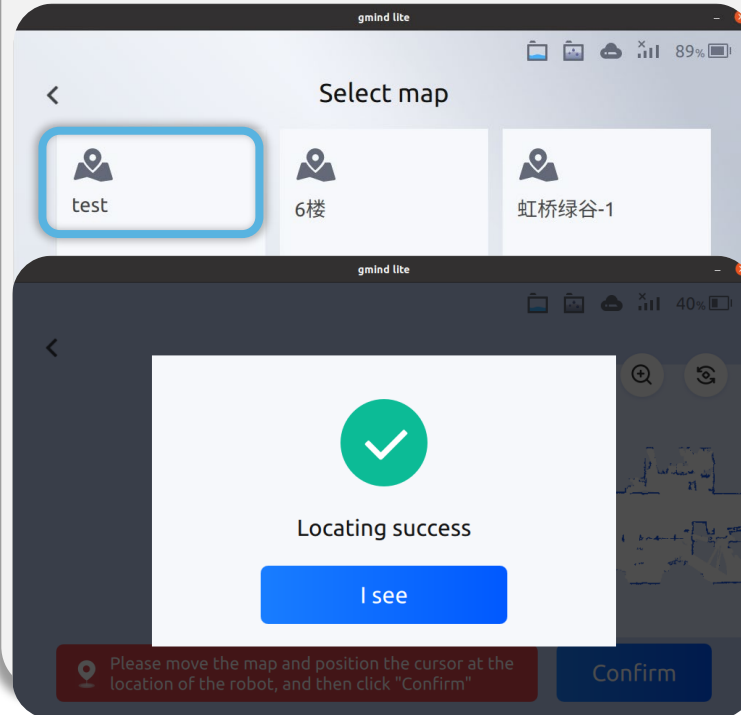
1.Choose Map

Map is the area you want the robot to clean.



2.Check Position

Check the robot's position. If the position is wrong, choose the map again and do re-positioning.



3.Choose Task

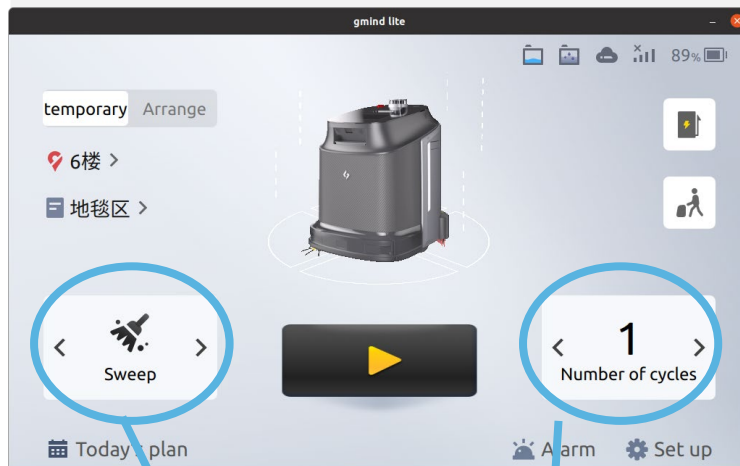
Choose a cleaning task that matches with the map(refer to the red frame below).



4. Choose cleaning mode

Four options: scrubbing, dust mopping, sweeping, vacuuming

Cleaning mode will be switched after each click.

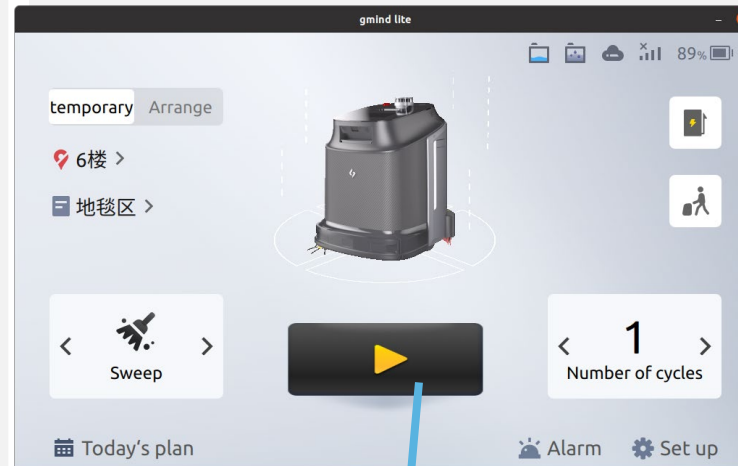


Cleaning Mode

Loop times

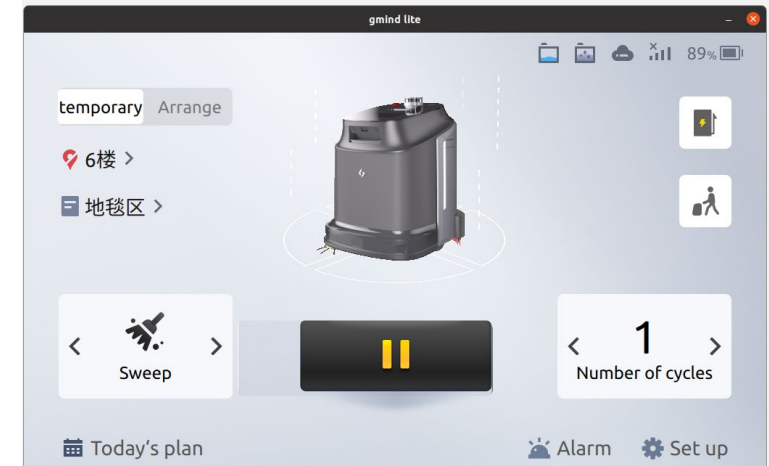
5. Start auto operation

Click start.



Start

6. Auto-operation interface

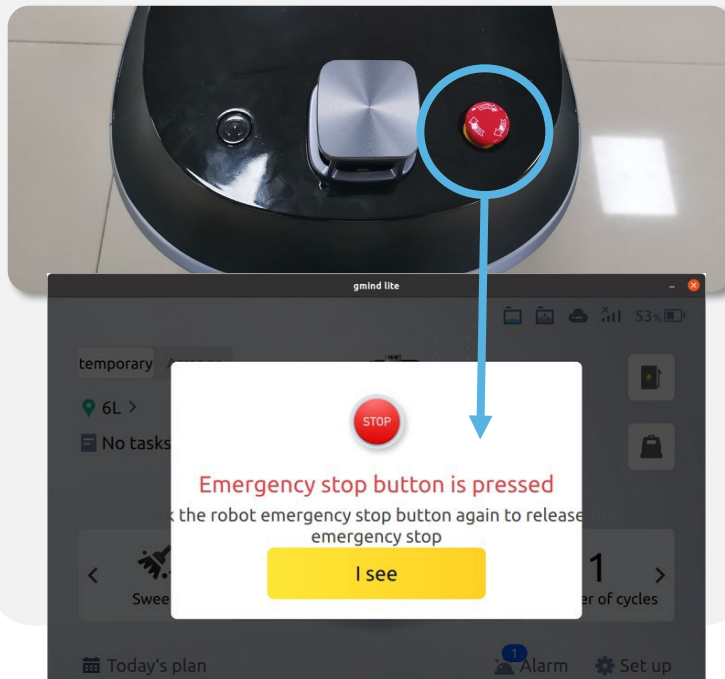


7.Pause


Press the red button to execute an emergent stop.

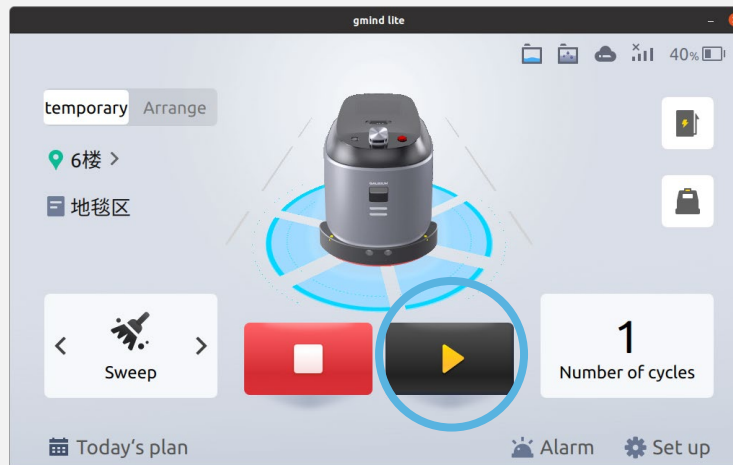
The robot re-starts 30 seconds after an emergent stop.

Click Confirm to retain the stop.




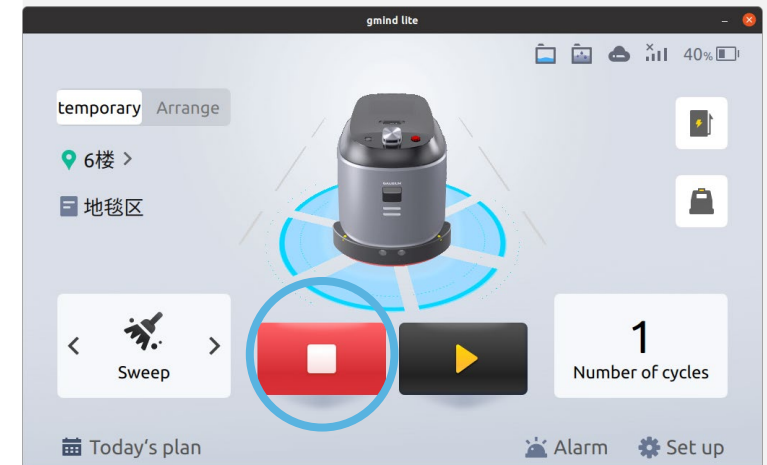
8.Continue

Click  to continue auto operation.



9.End

Click  to stop auto operation.



1.Switch to Manual Mode

Click “Manual Mode”, “Push” and “Confirm”




2.Move Robot

Move robot to the area to be cleaned.



3.Re-locating

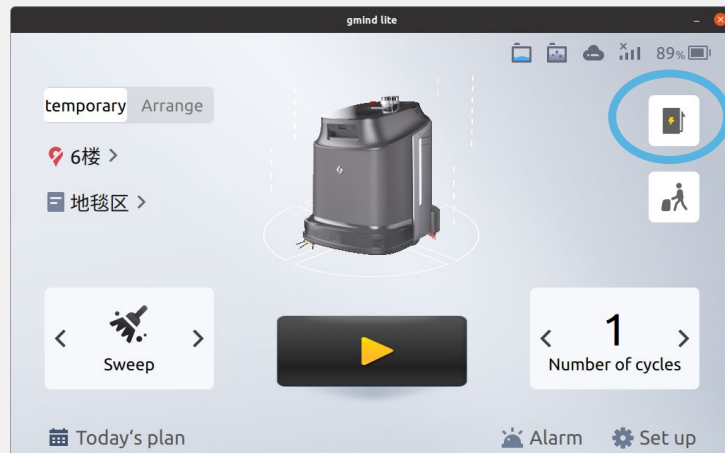
- Click  and select the map for re-locating.
- A message will pop out to tell whether locating succeeds or fails.
- If locating failed, please check the map or move robot to other place and try again.



1.Back to Charging Dock

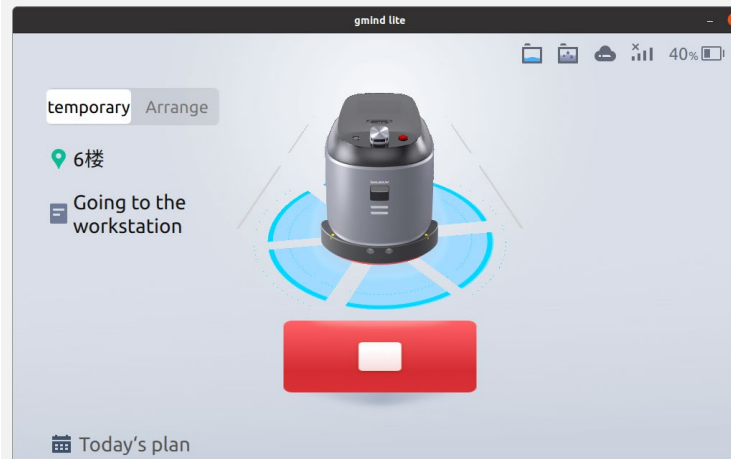
Click the **"Back to Charging Dock"** icon, robot will go back to the charging pile automatically.

Note: locating should be correct before clicking the icon.



2.Back to Charging Pile

The interface changes after clicking **"Back to Charging Dock"**(refer to the figure below).



3.Docking

After auto-docking succeeded, the screen will show current charging status. On-charging: the light indicator of charging pile and light strip of robot turn green. (Fig. 2)

Fully charged: Light strip of robot turns blue (Fig. 3)



Fig. 1:Not charged



Fig. 2:Charging



Fig. 3:Fully Charged

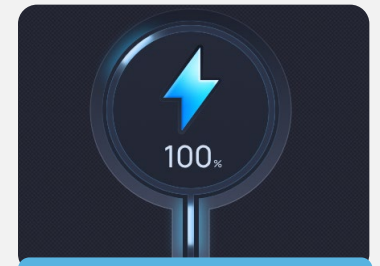


Fig. 3:Charging Icon

1. Switch between Vacuum and Scrubbing

A dust tank is for vacuum cleaning.
A wastewater tanks is for scrubbing mode.

- Open the top lid to change the tank.



2. Switch between Sweep and Dust Mop

A bristle roller brush is for sweep mode.
A cloth roller brush is for dust mop cleaning.

- Take out the roller brush assembly from right side of the robot and replace the sub-brush.

